

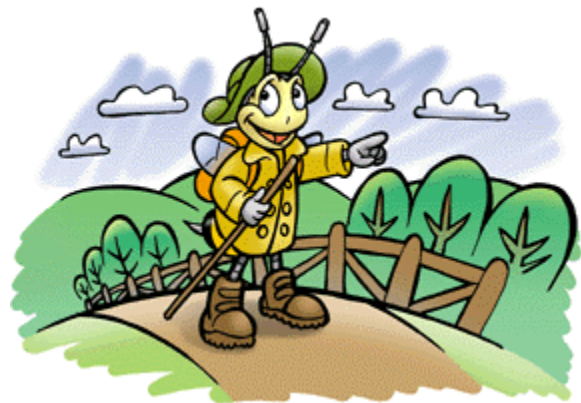
Problem Solving Unit



Take a Hike with Henry at <http://cyberbee.com/henryhikes/henry.html>
Choose to travel by train or to hike. Keep a journal of your activities.

*What's the railroad to me?
I never go to see
Where it ends.
It fills a few hollows,
And makes banks for the
swallows,
It sets the sand a-blowing,
And the blackberries a-growing.*

Henry David Thoreau in WALDEN



Henry and his friend each wanted to go to Fitchburg. Consider: How/why did each decide to travel the way they did? What were the advantages/disadvantages of each way?

Problem Solving Unit

Group Responsibilities:

Recorder _____

Leader _____

Supplier _____

Speaker _____

Encourager _____

All members must participate equally. If someone in the group has a question, they must relay their concern to the

Speaker as only the Speaker may ask questions of "Henry". The Leader is to see that each member is working on an activity, assign each person necessary homework, and see that all work is completed by Friday. The Supplier collects and returns supplies as necessary and is responsible for turning in the final product. The Encourager is to encourage each member to participate and do his/her best and to act as a peacemaker if members disagree. The Recorder keeps and organizes all responses.

Activities:

1. Henry takes a Hike Journal: 50 pts

2. Toothpick Solve 2 1 _____ 2 _____ 10 ea

Math, Can Be Fun: Match Problems p. 186

3. Clips Solve 2 1 _____ 2. _____ 10 ea

Clip Clue Puzzles by Evelyn B. Christensen Publisher: Dale Seymour Publications

4. Act It Out (Food for Thought) One "crossing" _____, One
"container" _____ 10 ea

Math Can Be Fun: Food for Thought p. 186

5. Who dunit? 1 easy _____ and either 2 medium _____ 10 ea
or 1 hard _____ 20 ea

Dr. Quicksolve Mini-Mysteries by Jim Sukach <http://www.quicksolvemysteries.com/>

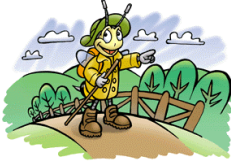
6. Problems From Math Book 1. _____ 2. _____ 3. _____
4. _____ 5. _____ 6. _____ 10 ea

Group Grade: A 200-180 B 179-160 C 159-140 D 139-120 F 119—



What's the railroad to me?
I never go to see
Where it ends.
It fills a few hollows,
And makes banks for the swallows,
It sets the sand a-blowing,
And the blackberries a-growing.

Henry David Thoreau



Henry Takes a Hike Problem-Solving Unit Test

1. List five of the items Henry carried with him as he hiked. Explain how he used each.

- 1.
- 2.
- 3.
- 4.
- 5.

2. Tell me about Henry.

3. The answer to your “Who dunit?” is:

4. Explain your strategy for solving _____:

5. Name and describe a problem-solving strategy different from the one you used in #4.

6. Make a journal entry for taking the train or a hike.

7. Sketch your solution to your Clip Clue Puzzle.

8. Illustrate your solution to the Toothpick Puzzle.

Work problems 9 and 10 on the back of this sheet.

Bonus: Name the author of *Henry Takes a Hike*. _____
The URL you used for Henry Hikes was _____